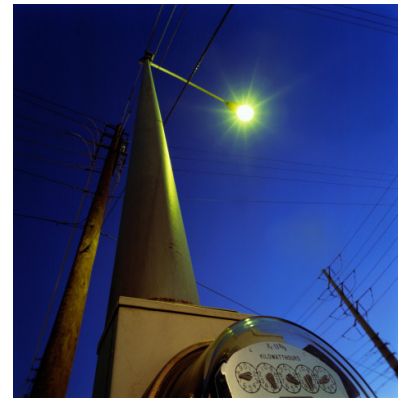




### Traffic Signals & Street Lighting

CRU's power linemen and traffic signal technicians help ensure safe traffic conditions, offering emergency response and storm restoration services to LDCs and municipalities. CRU's traffic maintenance experts ensure efficiency within the traffic sector through design, installation and traffic and street light maintenance. Our engineering consultants and traffic signal technicians can help you plan your next traffic development project and assist in emergency traffic and street light network failures. Our traffic services also include day-to-day traffic and street light services including inspection, cleaning, maintenance and conversions.



**Through CRU Solutions, ERTH Holdings Inc. offers customer tailored turnkey and full range of services to meet all of your signalized intersection or roadway illumination projects**

Our IMSA trained electricians can assist your organization in planning your next traffic signal or roadway lighting project.

#### Our Street Light Services:

- Installation and management
- Annual planning
- Maintenance
- Physical inspections and inventories
- Re-lamping
- Induction lighting
- LED Conversions
- Street light designs
- Emergency response

#### Our Traffic Signal Services:

- Installation and management
- Annual planning
- Maintenance
- Physical inspections and inventories
- Cleaning and re-lamping
- Conflict monitoring
- LED Conversions
- Emergency response
- Annual inspection
- Report generation
- Coordination and time data consulting
- Energy conservation programs

#### Construction Services:

- CRU Solutions can provide utility type servicing
- Poleline and subdivision installations
- Design for utilities and their customers



**Looking for compliance in meeting Ontario Good Roads and Liability risk management? CRU Solutions provides essential emergency services as well as routine inspection and conflict monitor testing and reporting.**





### About CRU Solutions

CRU stands out in the world of construction and power line contractors as an industry-certified construction, maintenance, meter service provider and traffic installation company. CRU provides service to local distribution companies (LDCs), municipalities and developers within a 100 km radius of its central office in Ingersoll, Ontario.

### About ERTH

**ERTH** A dynamic group of companies, ERTH is known for its expertise, innovation and resource management. Each company within the ERTH family contributes to its expertise and position as a global front runner – providing leadership, technology, safe and reliable electricity distribution and software solutions, all the while investing in the environment to ensure future stability and security.



### Contact Information

**Ron Osborne**  
Sr.Vice President & G.M.  
ERTH Holdings Inc.  
P: 519.485.6038 ext 290  
rosborne@erthcorp.com

**Scott Garton**  
Vice President  
CRU Solutions  
P: 519.485.6038 ext 228  
sgarton@cru.erthcorp.com

**Dale Flynn**  
Sales Manager  
ERTH Holdings Inc.  
P: 519.485.6038 x 282  
dflynn@erthcorp.com

**Head Office:**  
200-295 Wolfe St.  
London, ON  
N5B 2C4

